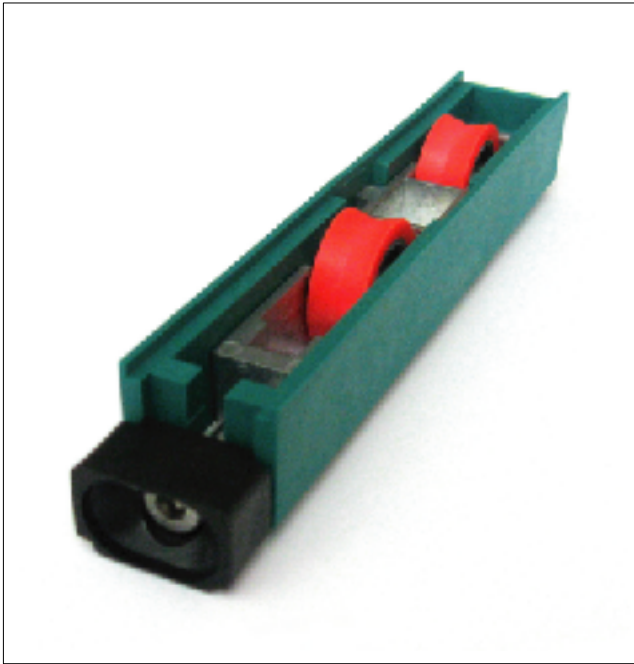


Carrello registrabile "Roller Green 120"



Carrello registrabile e ispezionabile, permette cioè la eventuale sostituzione senza dover aprire l'anta, realizzato in nylon con portaruote in zama.

Portata 2 carrelli Kg 120

CONFEZIONE

Scatola da 10 kit (1 kit 4 carrelli)

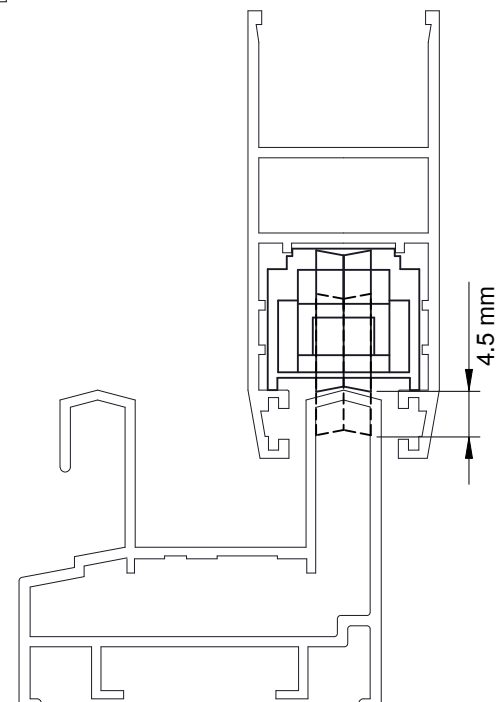
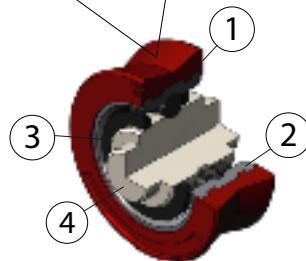
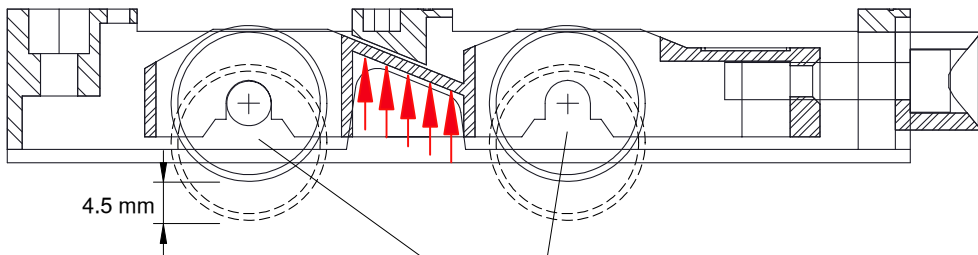
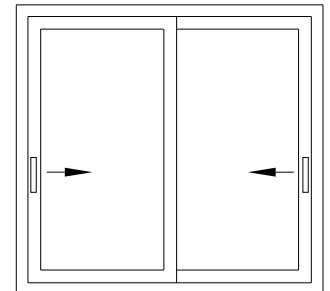
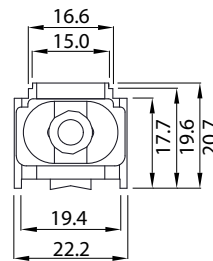
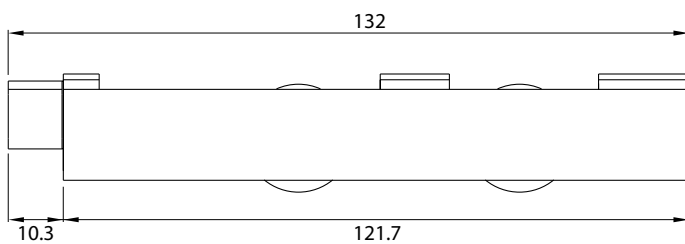
Adjustable sliding window "Roller Green 120"

Rail, which can be adjusted and inspected. They can be changed without having to dismantle the wing, they are made from nylon, while the wheel holder is made from zamak.

Capacity of 2 rails Kg 120

PACK

Box with 10 kits (1 kit 4 rails)



Adattabilità ai sistemi
Adaptability to the systems

ALL.CO Export 60S	■
PASSERINI Skeit 60	■
Skeit 60 Super (anta da 32 mm)	■
Skeit 70	■
Skeit THERMO 70	■
PROFILATI PE 60 Slide	■

- ① Rivestimento nylon + fibra vetro
Nylon coating + fiber glass
- ② Anello in acciaio temprato
Ring hardened steel made
- ③ Schermatura in nylon
Shielded in nylon
- ④ Asse in acciaio temprato zincato bianco
Hardened steel axle white galvanized